

NEWSLETTER

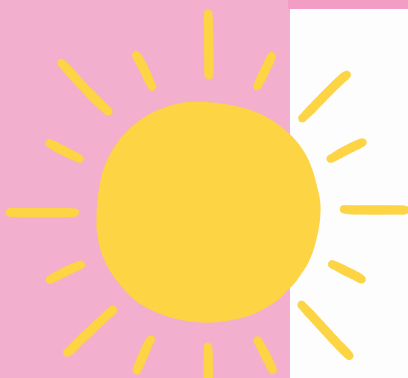
VOLUME 4

Megan Baker House

MONTHLY NEWSLETTER

MAY 2025





Summer Intensives!

OUR SUMMER INTENSIVES ARE BACK FOR ANOTHER YEAR!

THIS YEAR, WE ARE RUNNING FOR 5 WEEKS ALONGSIDE OUR REGULAR SESSIONS! SESSIONS ARE RUNNING FROM MONDAY 21ST - 22ND AUGUST AT OUR TWO LEDBURY VENUES AND 11TH - 13TH AUGUST AT LUDLOW.

**IF YOU ARE INTERESTED IN THESE SESSIONS, CONTACT SUE ON
SUE@MEGANBAKERHOUSE.ORG.UK**

Golf Day.

6TH JUNE 2025

OMBERSERLY GOLF CLUB, WR9 OLE

**REGISTRATION 07:30
SHOTGUN START 08:30**



If you can donate a prize, let us know!

For more info contact:
LEE@MEGANBAKERHOUSE.ORG.UK

**£200 for a
4 ball**

(INCLUDES BREAKFAST
& BUGGY)



Fun in the mud!



Mud Bath 2025 was a great success. It was well-attended and our T-shirts (provided for free by Red Penguin) really helped our team of 32 runners stand out from the crowd. Three of our team placed in the top of their prize category! We managed to raise over £1,750 and increased awareness of the charity amongst new crowds. Our relationship with the organisers, Relish Running, was further strengthened and they have invited us to marshal at the event next year. It would be good if we could secure volunteers for this – hint, hint!



A warm welcome to The Rainbow Centre.



.MBH recently welcomed Istvan & Ildiko from The Rainbow Centre Fareham, who came to visit MBH Ledbury adults section during May.

The Rainbow Centre provides Conductive Education in Fareham, its always great to build relationships with other CE centres.



≡Welcome≡

Whitecross High School



In May, MBH were delighted to welcome year 10 students from Whitecross High School and their teachers for an introduction to our services and the path to becoming a Conductive Education Specialist. The students explored key areas including psychology, physiology, theory and practical application- All while actively participating and showing great enthusiasm. It was a pleasure to see their curiosity and energy in action. A brilliant group with a bright future ahead!



Feedback

The feedback I have had from students and staff has been great and we really appreciate you taking the time to put on a great day for our students, which will help them shape their futures moving forward.

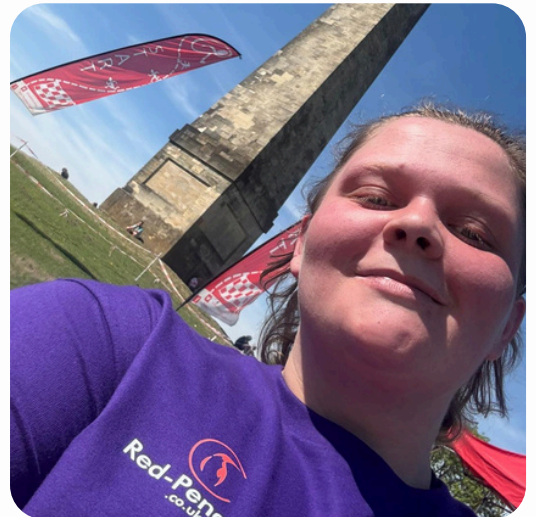
I just wanted to say a huge thank you for accommodating our year 10's.

EMPLOYEE SPOTLIGHT...

BECCA - CONDUCTIVE ASSISTANT AND 3RD YR STUDENT

Employee spotlight
will give you a chance
to get to know our
staff a little better.

This month's
employee spotlight is
on Becca!



1. IF YOU COULD TRAVEL ANYWHERE IN THE WORLD,
WHERE WOULD YOU GO AND WHY?

I LOVE TO GO TO AMERICA AS I HAVE LOTS OF FRIENDS
OVER THERE.

2. YOUR FAVOURITE MOVIE OR TV SHOW?

THE NOTEBOOK MUST BE MY ALL-TIME FAVOURITE.

3. DO YOU HAVE ANY PETS?

I HAVE TWO DOGS - GRACE AND HONEY

4. WHAT'S A FUN FACT MOST PEOPLE WOULDN'T
KNOW ABOUT YOU?

MOST PEOPLE DON'T KNOW THAT I LOVE TO SING!

Achievement of the month!

ANNE

FROM OUR
CHELTENHAM STROKE
GROUP

Anne is rolling onto both sides when lying on a plinth, this is something Anne has been working on for a long time - Working on transference of weight, perception of space, overcoming anxiety towards rolling and so much more!



May is stroke awareness month

Well done Anne!



Potential funding

Children

Shropshire

· **Shropshire cerebral palsy society** -

Website:

<https://www.shropshirecerebralpalsysociety.co.uk/>

CP diagnosis required

Some schools will fund sessions - especially if have EHCP.

Adults

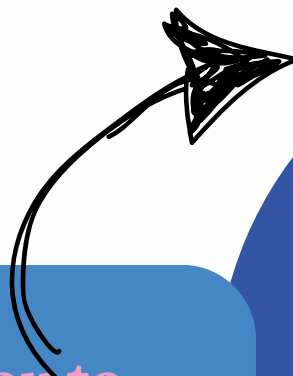
Herefordshire - Parkinsons

· Hereford & District Parkinsons branch -

If you are a member, they will pay 2 x £15 a month

FOR MORE INFO ON FUNDING,
CONTACT
SUE@MEGANBAKERHOUSE.ORG.UK

THANK
YOU!



As always, thank you to everyone who has donated items from our wishlist! We are so grateful!

Check out our
wishlist via the QR
code below

AMAZON WISHLIST

